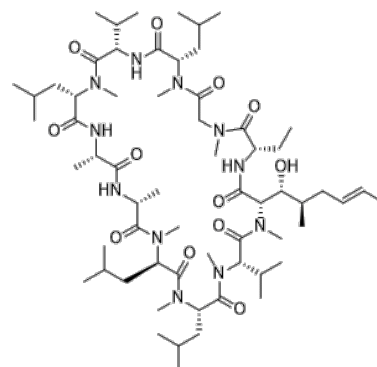

Product Name	: Cyclosporin A
Cat. No.	: PC-22839
CAS No.	: 59865-13-3
Molecular Formula	: C ₆₂ H ₁₁₁ N ₁₁ O ₁₂
Molecular Weight	: 1202.64
Target	: Protein Phosphatase/PTP
Solubility	: 10 mM in DMSO



Biological Activity

Cyclosporin A (CsA, Cyclosporine A) is a immunosuppressant agent and highly specific inhibitor of the Ca²⁺/calmodulin-dependent protein phosphatase PP2B with IC₅₀ of 65 nM in rat pancreatic acinar cells.

Cyclosporin A also inhibits cholecystokinin-, 100 pM, or carbamylcholine-, 10 microM, induced amylase release in a concentration-dependent manner.

Cyclosporin A specifically blocks the cholecystokinin-stimulated dephosphorylation of a 24-kDa protein in a concentration range similar to that seen for inhibition of secretion.

Cyclosporin A stimulates glucose-induced insulin secretion by inhibiting the activity of PP2B, an event that may be involved in mechanisms governing glucose-induced insulin secretion via dephosphorylation of synapsin I-like protein in MIN6 cells.

References

Groblewski GE, et al. J Biol Chem. 1994 May 27;269(21):15111-7.

Yoshida T, et al. J Cell Sci. 1994 Jul;107 (Pt 7):1725-35.

Ebihara K, et al. Endocrinology. 1996 Dec;137(12):5255-63.

Caution: Product has not been fully validated for medical applications. Lab Use Only!

E-mail: tech@probechem.com
